

THE
RARE CORK
CELEBRATE FINE LIVING



**A display system that is as sophisticated
as your collection.**

Let your wine collection become a feature in your home or entertainment area with our elegant wine display systems. The versatile nature of our product allows your display to grow with your collection, giving endless options for showcasing your wines.

INDEX

Narrow Peg Columns	4
Broad Peg Columns	9
Free-standing Peg Columns	12
Peg panels	15
Overview	19
Materials	20





NARROW PEG COLUMNS

This sleek and minimalist wall display system fits effortlessly into any environment, from larger entertainment walls to tricky under stairs spaces. It is available in cork facing and label facing orientations and a variety of heights. Our **Narrow Peg Columns** come in matt black or horizon gold and pegs are available in solid aluminium and brass.

Cork Facing





Label facing

Narrow cork facing columns
available in 3, 6, or 12 row
configurations with corks facing
outwards





Narrow label facing columns available in 3, 6, or 12 row configurations with labels visible; bottles positioned 2-deep. These offer a sturdy support for a variety of bottle shapes including tapered Burgundy and Champagne bottles.

BROAD PEG COLUMNS

The **Broad Peg Column** creates a sleek statement piece in your home, showcasing your wine collection in contemporary, bold steel. It is available in cork facing and label facing orientations and a variety of heights. Our **Broad Peg Columns** come in matt black or horizon gold and pegs are available in solid aluminium and brass.





Broad label facing columns available in 3, 6 or 12 row configurations with labels visible; bottles positioned 2-deep. These are suited to most 750ml bottles particularly straight Bordeaux shapes.

Broad cork facing columns available in 3, 6 or 12 row configurations with corks facing outwards.





FREE-STANDING PEG COLUMNS

Our label facing free-standing peg columns allow you to maximize your display area, giving you a large bottle capacity. These columns are available in a number of heights and can be wall or ceiling mounted, as well as single-sided or double-sided options.

Our free-standing peg columns come in matt black or horizon gold and pegs are available in solid aluminium or brass.

Free-standing single-sided
peg columns available in 14-19 row
height options with labels-facing
outwards, bottles positioned 2-deep,
on 1 side of the column.
These columns look striking
in front of a feature wall.





Free-standing double-sided peg columns available in 14-19 row height options with labels-visible, bottles positioned 2-deep, on 2 sides of the column. These columns are perfect as a room divider or in a glass-enclosed cabinet.

PEG PANELS

Our modular peg panels create a premium display for your wine, combining a variety of backing panel and peg materials to suit your home interior, from contemporary matt black and soft oak, to patterned resin-stone, aluminium and brass.





Cork facing peg panels available in 3-row-high configurations, with corks facing outwards and 9 bottles per panel.

Label facing peg panels available in 3-row-high configurations, with labels visible; bottles positioned 2-deep and 6 bottles per panel.





ALUMINIUM



BRASS



STAINLESS STEEL

PEGS

Our Wine Pegs are available separately for sale in solid clear anodised Aluminium, Solid Brass and Solid Stainless.

All our pegs feature our soft touch technology that offers increased stability and protection against damage.



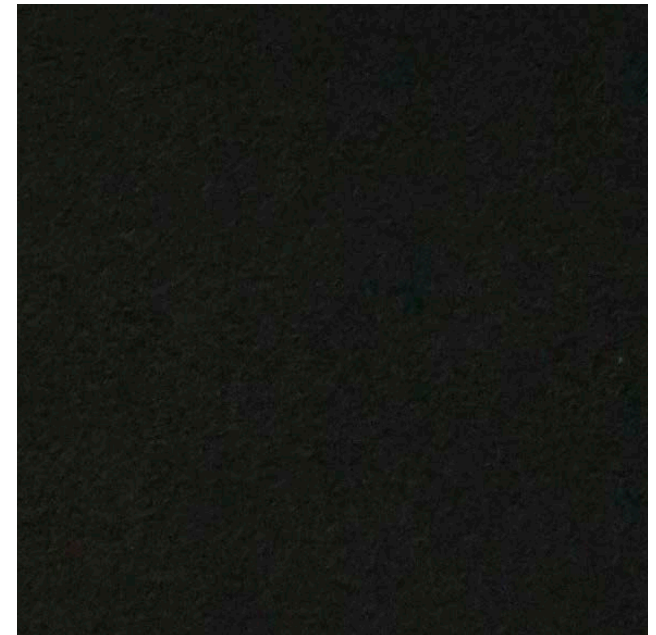
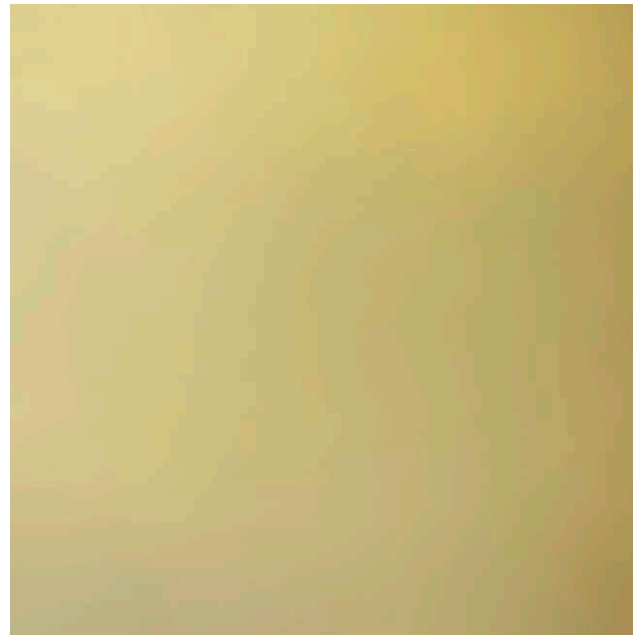
Our wine pegs are best suited mounted onto timber or mdf-core panels; or can be mounted direct to your brick or concrete wall if fitted by an experienced installer. Peg bundles are supplied complete with washers and come with a step-by-step install manual; and a guide on what fixings need to be purchased by the client for the relevant surfaces.



CATEGORY	PRODUCT	PRODUCT DIMENSIONS (LxWxH IN MM)	PEG ORIENTATION	BOTTLE CAPACITY
Wall mounted Narrow peg columns	3 rows high	20mm L x 6mm W x 375mm H (x2 units)	Cork facing	3 bottles
			Label facing	6 bottles
	6 rows high	20mm L x 6mm W x 750mm H (x2 units)	Cork facing	6 bottles
			Label facing	12 bottles
	12 rows high	20mm L x 6mm W x 1500mm H (x2 units)	Cork facing	12 bottles
			Label facing	24 bottles
Wall mounted Broad peg columns	3 rows high	100mm L x 6mm W x 375mm H	Cork facing	3 bottles
			Wide saddle	6 bottles
	6 rows high	100mm L x 6mm W x 750mm H	Cork facing	6 bottles
			Wide saddle	12 bottles
	12 rows high	100mm L x 6mm W x 1500mm H	Cork facing	12 bottles
			Wide saddle	24 bottles
Freestanding peg columns	15 rows high	230mm L x 38mm W. Suits ceiling heights 2060-2190mm H	Label facing single sided	30 bottles
			Label facing double sided	60 bottles
	16 rows high	230mm L x 38mm W. Suits ceiling heights 2185-2315mm H	Label facing single sided	32 bottles
			Label facing double sided	64 bottles
	17 rows high	230mm L x 38mm W. Suits ceiling heights 2310-2440mm H	Label facing single sided	34 bottles
			Label facing double sided	68 bottles
	18 rows high	230mm L x 38mm W. Suits ceiling heights 2435-2565mm H	Label facing single sided	36 bottles
			Label facing double sided	72 bottles
	19 rows high	230mm L x 38mm W. Suits ceiling heights 2560-2690mm H	Label facing single sided	38 bottles
			Label facing double sided	76 bottles
	20 rows high	230mm L x 38mm W. Suits ceiling heights 2685-2815mm H	Label facing single sided	40 bottles
			Label facing double sided	80 bottles
Peg panels	3 rows high	380mm L x 225mm w x 380mm H	Cork facing	9 bottles
			Label facing	6 bottles

OVERVIEW

PEG COLUMNS



- Made from our signature steel plate powder coated in **matt black** or semi-sheen **horizon gold** finishes
- All steel coated in **Kal-Gard SCK** for premium corrosion-resistance in coastal installation and in low temperature/high humidity controlled wine cellars.

MATT BLACK



- **Matt black:** MDF core with Matt Black laminate

WHITE OAK



- **White Oak Veneer:** MDF core with white oak veneer and solid oak edging. **Rubio Monocoat RMC** Oil finish for a matt low VOC finish.

STORM RIPPLE



ONYX RIPPLE



CLOUD RIPPLE



- **Resin-stone:** Lightweight semi-gloss **Meyistone resin-stone** gives the appearance of natural stone without the extra weight, with 3 options to choose from to suit your décor: **Storm Ripple**, **Onyx Ripple** or **Cloud Ripple**.

MATERIALS:

Contact

WWW.THERARECORK.COM.AU

INFO@THERARECORK.COM.AU

TEL: 03 9002 4019